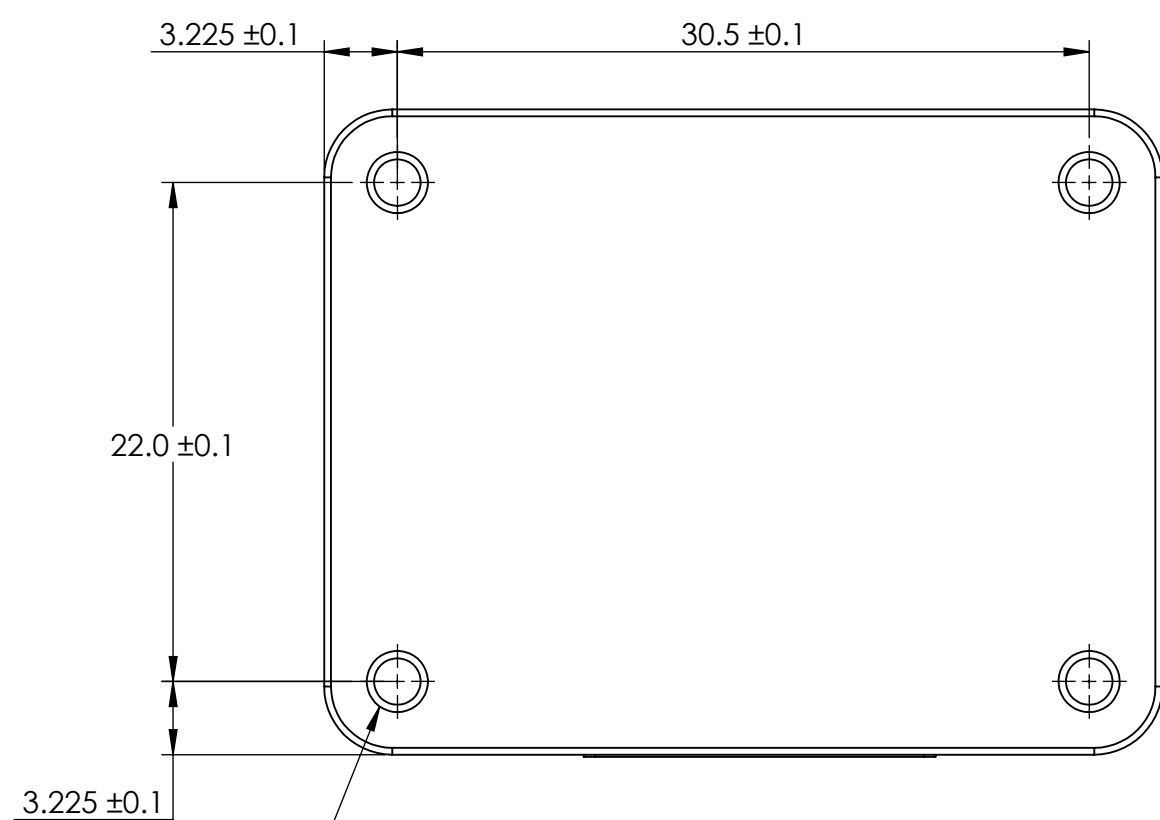
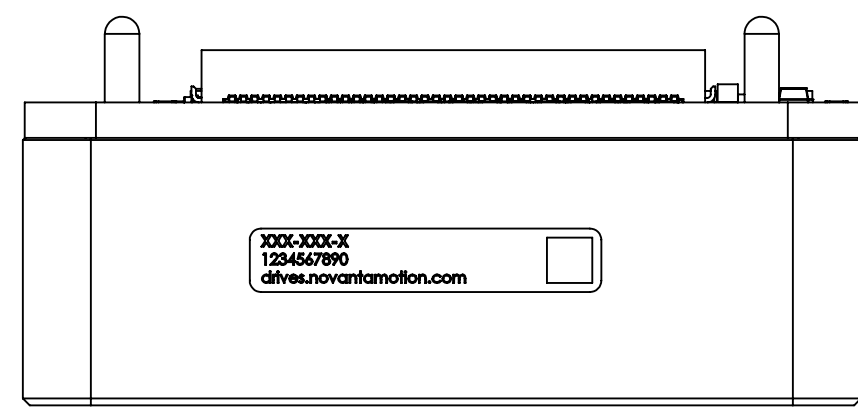
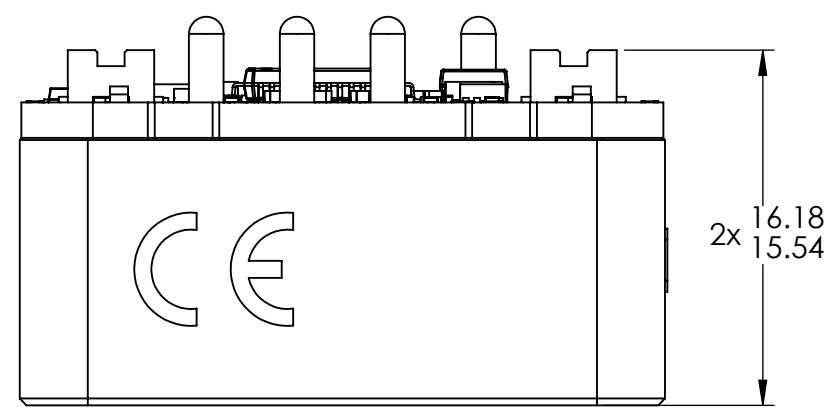
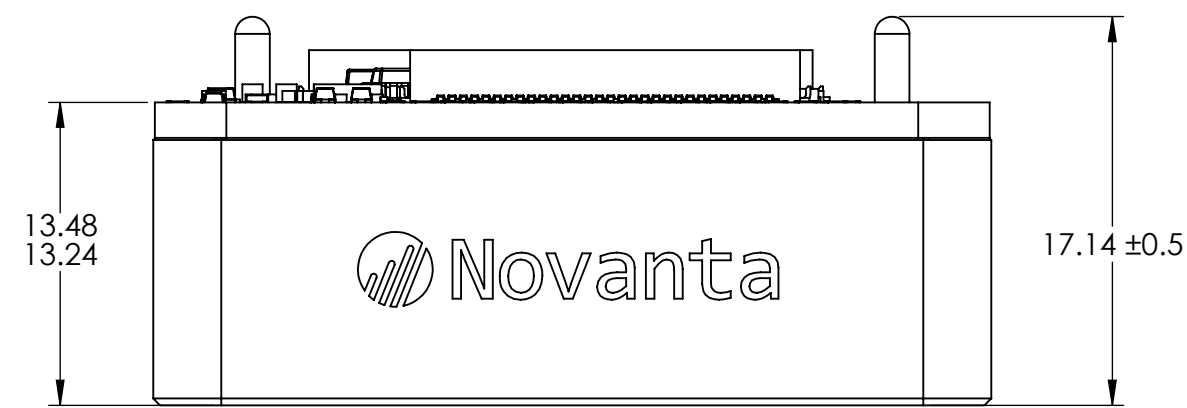
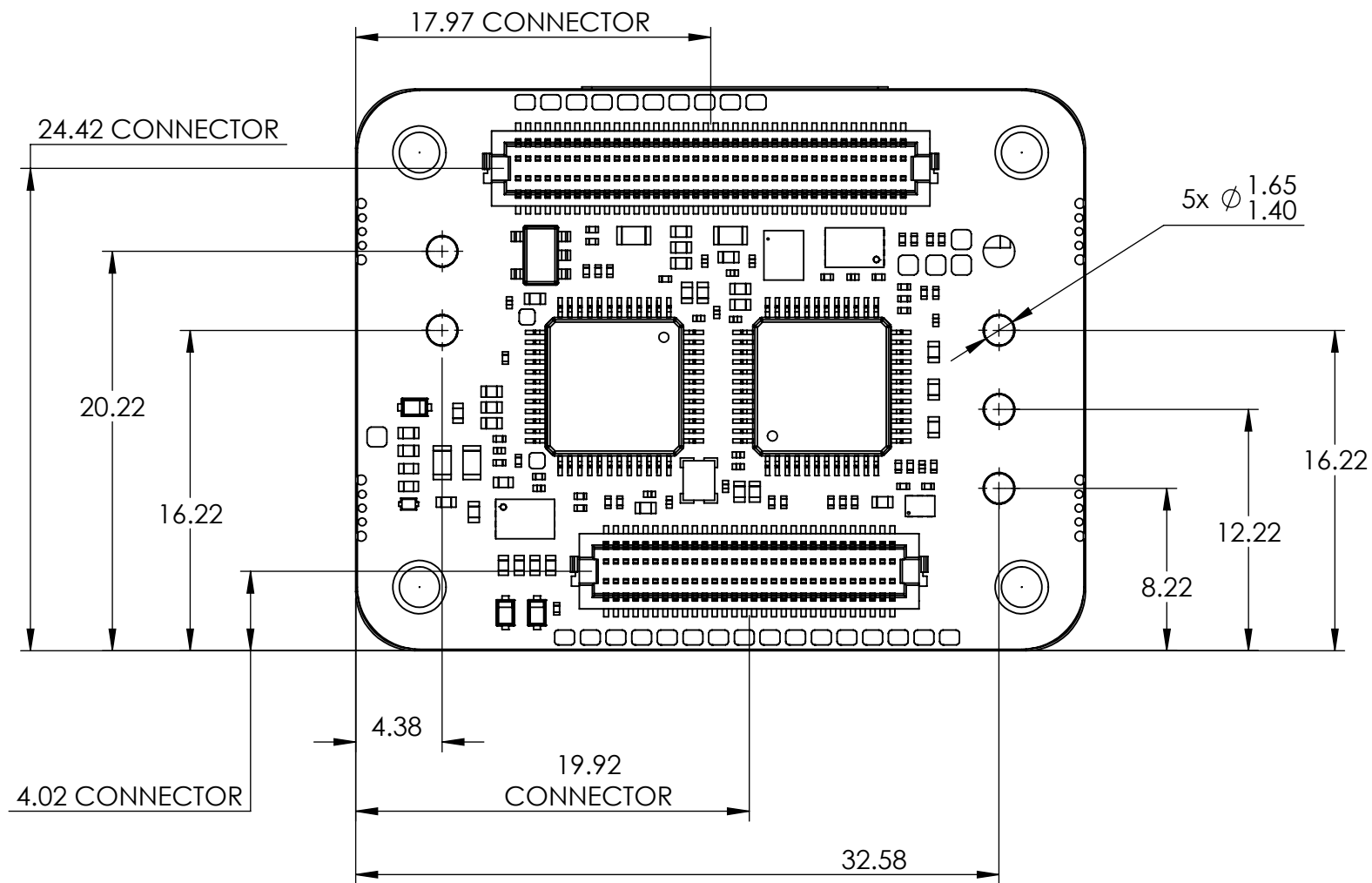
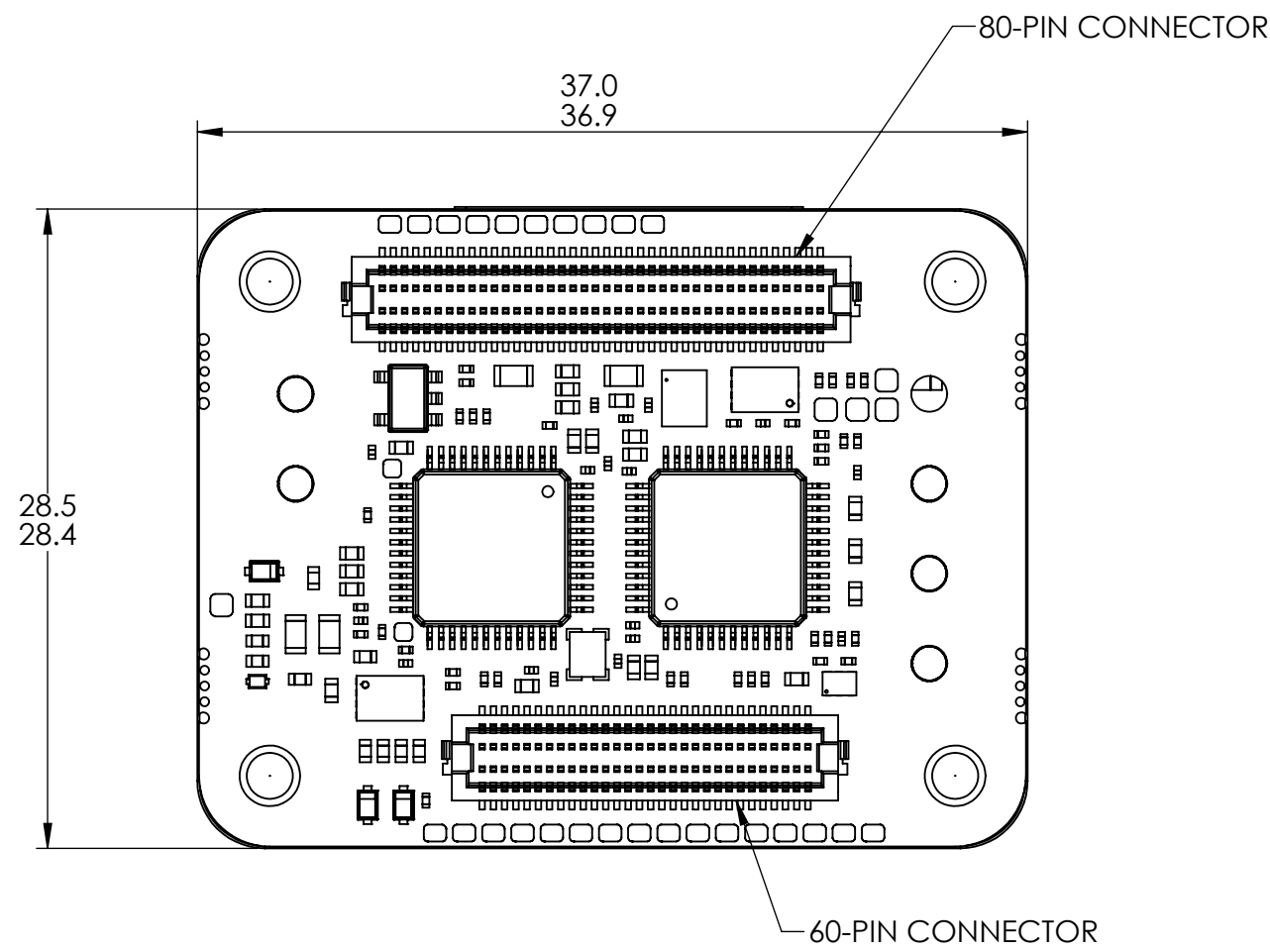
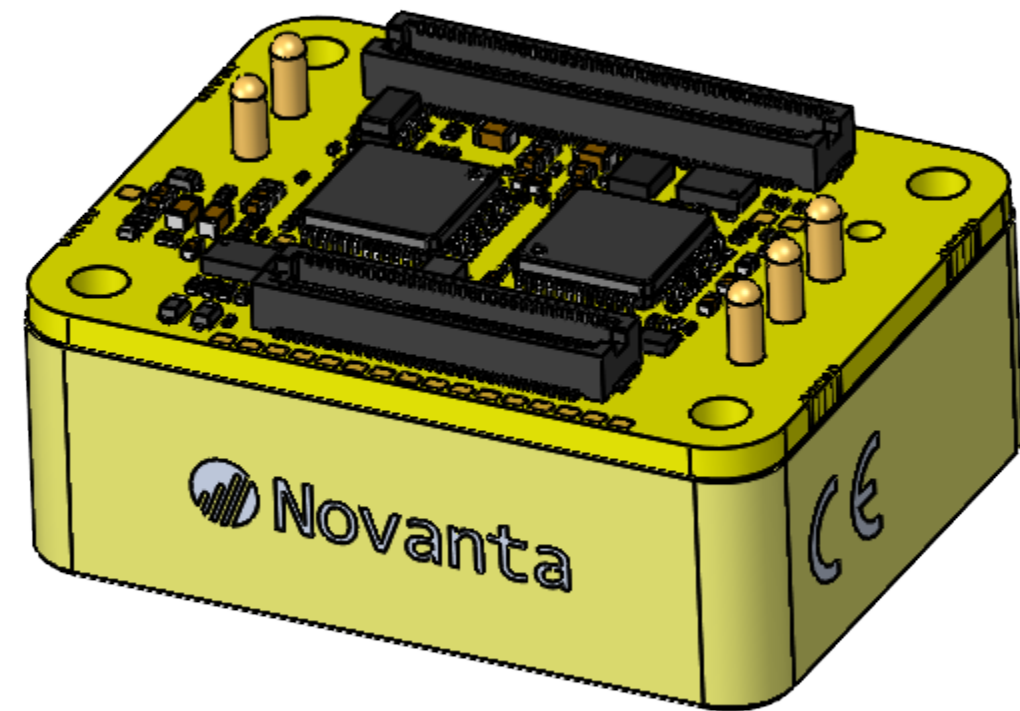


REVISIONS				
REV.	ECN	BY	APPVD	DATE



4x M2.5-0.45p - 6H ∇ 6.0



TOLERANCES: UNLESS OTHERWISE SPECIFIED
LINEAR: X ± 0.5
X.X ± 0.2
X.XX ± 0.1
ANGULAR: $\pm 0.5^\circ$
SURFACE ROUGHNESS: $\sqrt{1.6}$

THIRD ANGLE PROJECTION
THE INFORMATION CONTAINED IN THIS DRAWING IS THE SOLE PROPERTY OF NOVANTA INC.
ANY REPRODUCTION IN PART OR AS A WHOLE WITHOUT WRITTEN PERMISSION OF NOVANTA IS PROHIBITED
info@novanta.com

NOTES: UNLESS OTHERWISE SPECIFIED, DIMENSIONS ARE IN MILLIMETERS. SIZES APPLY AFTER FINAL FINISH / PLATING. ITEMS MUST NOT EXHIBIT BURRS, SWarf, SCRATCHES, DENTS OR DAMAGE. ITEMS SHOULD BE CLEANED THOROUGHLY AND PACKAGED APPROPRIATELY FOR SHIPPING. INTERNAL EXTERNAL CHAMFER 0.3x45° MAX OR RADIUS R0.3 MAX.
DRAWING STANDARD: BS 8888
DO NOT SCALE DRAWING IF IN DOUBT ASK

NAME	DATE
SES	08/07/2024
APPVD	XXX
XXX	XX/XX/XXXX

TITLE	Everest Safe EtherCAT
DWG No.	EVS-S-NET-E
PART No.	EVS-S-NET-E
WEIGHT:-	SCALE:3:1
SHEET 1 OF 1	

